

The Atlantic Fountain Company

Residential and Commercial Water Features



The Atlantic Fountain Company combines design expertise, project experience and product selection to provide our customers with beautiful and proven results in water feature design and construction. We can get your project from an idea into practical reality at a reasonable price.

Water features may be as simple as a small backyard pool with a single nozzle or as elaborate as a corporate centerpiece choreographed to music. Our scope of design ranges from simple hand sketches to detailed project specifications, AutoCad® drawings and 3D simulations. Selecting the right design tool provides a cost-effective route to promote, build and document your project.

Our design scope includes:

Architectural / prefab
Indoor features
Interactive water play

Floating fountains & pumps
Musical animated fountains
Laminar & ballistic nozzles

Waterfalls & streams
Water gardening
Electronic controls design

Project Experience

Our experience dates back to 1980 with the design of one of the first fully computer controlled musical fountains, The Garden of Living Waters. Since this time design and project work has grown to encompass virtually every type of water feature.

Experience confirms what will work successfully, enabling us to offer a proven path for needs basic or esoteric. We present project options and tradeoffs so that you may make an informed decision and receive a competent design based on your needs.



Product Selection

A good design is not complete unless it is implemented with quality products matched to the application. For example, swimming pool or basement sump pumps are fine for their intended use, but are usually a poor choice for a fountain.

In addition to our own products, years of projects have built close relationships with the major fountain component manufacturers in the US, Canada and Europe. No company makes everything, nor do they make the best of everything, but it is available to make a sound selection of quality components that will meet price and performance expectations.

Design Services

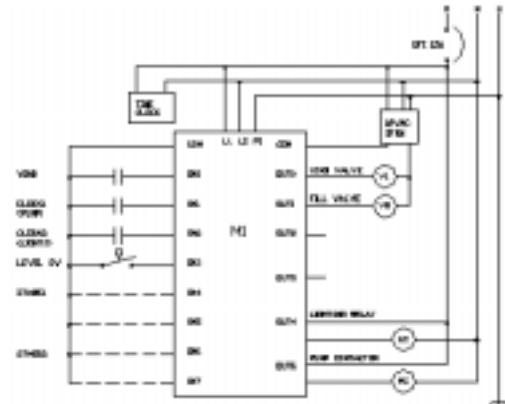
Bringing an idea into reality means combining experience in design, installation and component selection. Often, a discussion and pencil sketch is all that is needed, but we can also meet your needs through a more formal service:

- Proposal - We can provide the equipment estimates and quotations for your project. Many systems can be prefabricated or assembled from combinations of stock components. This provides variety and retains reliability through the use of proven components and design.
- Specifications - Category code 02815 specifications can be developed for larger projects. These may be used for bid purposes or to more rigidly define the requirements of a privately funded project. As desired, the specifications can list component sources from multiple vendors to secure the best bid price.
- Bid Evaluation - It is not uncommon to see bids with a **three-fold** cost spread. If you began with a good design, now is not the time to accept substitutions. Let us guide you through the technical details to a successful implementation.

- 3D Project simulation - Plans help build a project, but may not help to visualize it or win design approval. Renderings and video “fly bys” show the end result before construction. The 102 foot fountain shown has 300,000 elements that make up its 3D world. Simulations can also “drop” a project on your front lawn or offer a choice of water patterns when restoring an existing fountain.

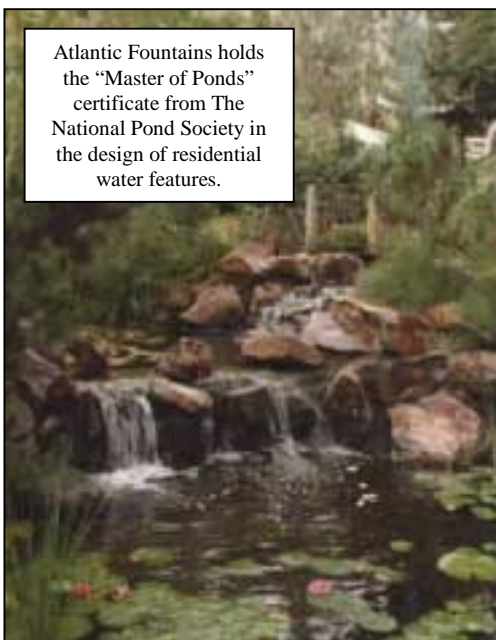


- Computer Aided Drafting - Plans, plumbing and electrical schematics can be supplied in AutoCad® format.
- Controls Engineering - Many projects are built without considering how the owner will interact with it. A “well behaved” water feature needs a reliable fill system, but often wind control and energy management as well. Such a system will be a pleasure to own and needs less time to maintain.
- Documentation - The project is not done until the paperwork is finished. Improper adjustment, maintenance or chemical treatment can damage components. Our manuals include more than cut-sheets, but encompass startup, shutdown and operating procedures, as well as maintenance requirements.



Water Features and Components

With a selection of over sixty fiberglass pools and cascades, Atlantic Fountains can supply a quality foundation for your project. Fiberglass construction offers distinct construction advantages. Rigid fiberglass stands up to the weight of rocks without crushing like plastic pools, allowing a rugged but natural design. We will be happy to give you an understanding of what each design has to offer to maximize your enjoyment from available space.



Atlantic Fountains holds the “Master of Ponds” certificate from The National Pond Society in the design of residential water features.



The six foot pool above needs only a level surface and a ground fault outlet. Add a touch of personal landscape effort and an attractive fountain can go from box to beautiful in a few hours. We offer a variety of components, including a full selection of nozzles and underwater lights. Atlantic Fountains offers pumps for waterfalls and streams, whether they are five inches or fifty feet across.

Water features include architectural, landscape and floating designs. Commercial water features typically include a broader and more rugged collection of components. Automatic fill and wind speed controls are included to reduce the involvement of personnel.



Architectural projects include indoor and outdoor systems. The distinction is typically only a question of size, with environmental issues such as freezing, wind, evaporation and contamination being more of a design concern with outdoor projects. We provide attention to detail in each of the major areas of feature design and product selection:



Pools - The foundation for the water feature, material selection depends on the intent of the project and its potential winter use. The all-season modular fourteen foot pool shown was shipped and assembled on-site.

Pumps - Few pumps are manufactured with fountain applications in mind. The “best” pump will meet the flow requirements with a minimum of maintenance and energy consumption.

Nozzles - Nozzles and spray rings give a fountain its desired appearance. Dozens of basic patterns and variations provide many interesting effects.



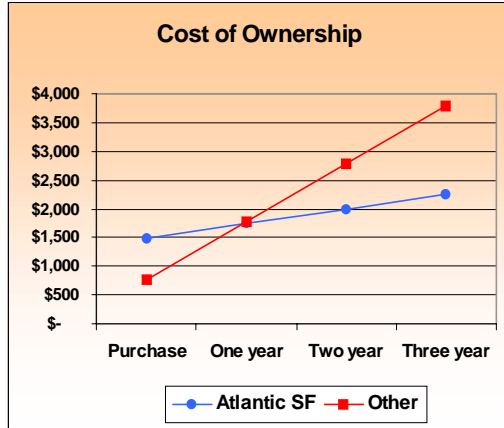
Lighting - Lighting brings forth a special beauty to water. Consult with Atlantic Fountains for the evening effect you desire, including color blending and musical animation.

Controls - A specialty of Atlantic Fountains is the design and construction of water feature control systems. These tie together the components of the water feature into a “well behaved” system. Our animation control software ACCESS can control hundreds of lights and nozzles, choreographing each action to music.



Landscape Water Features

Streams and waterfalls bring the beauty of water into a landscape. These features can be built in their entirety with a bottom pool of water or added to an existing pond or lake.



Landscape water features can be subject to a “drive-by” pump purchase. The chart compares two real pumps for a twelve-foot wide waterfall. A half hp all-stainless pump from Atlantic is superior to a large, heavy, two hp cast iron pump. Why not buy quality now and save for years to come?

A reduction in horsepower not only reduces initial and operating costs, but maintenance as well. Even a 7.5 hp 1,400 GPM pump is light enough to be moved by two people, removing the need for cranes or hoists. The pump can be offered in a floating configuration, eliminating the need for a pump vault entirely!

Floating Fountains

Floating fountains are the most practical means to bring aeration to ponds and lakes. A floating fountain will track with varying water level and is easy to install in an existing lake.



Atlantic Fountains can provide floating fountain systems from compact pond aerators to sprays exceeding 100 feet.



Experience with hundreds of floating fountain installations allows us to offer a solution that will balance your need for aeration and aesthetic beauty. Ask for our Floating Fountain catalog for more information.